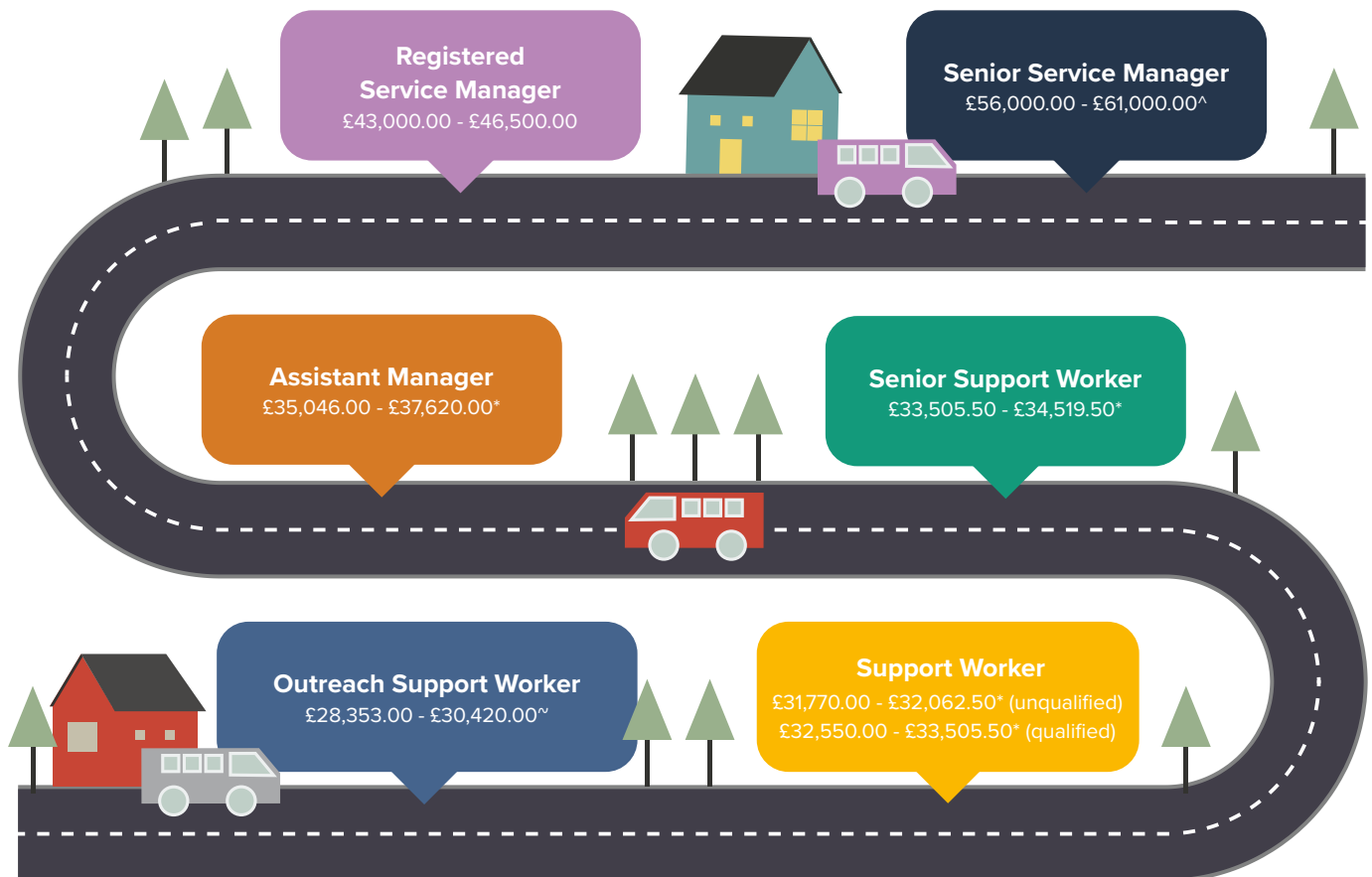


# Career Journey Road Map

## Your career within Supported Accommodation at Restorative SCS

We're committed to the development of all our staff, and, where possible, look to promote internally, creating long-term careers for those who seek it. In turn we build a strong workforce of knowledgeable, dedicated teams, all working towards the same model of care which ensures the highest level of care for our looked after young people.

We're also proud to be a [Living Wage Employer](#), committed to paying our employees a real living wage, and accredited by the [Living Wage Foundation](#). All our Level 3/4 qualified staff are paid above the Living Wage (outside London) rate, with unqualified staff supported to become qualified and progress.



\* Salary is based on working a 1 on 2 off rolling shift pattern inclusive of night-time support allowance.

~ This role does not require night-time support and does not include a night-time support allowance in the salary.

^ Plus annual performance payment between £4,000 - £8,000 and 5 additional days leave, dependant on role.